



Together We Engineer

The Top 50 Women in Engineering 2025

WE5 

 wes

The Women's Engineering Society

www.wes.org.uk

Charity number 1008913



#TogetherWeEngineer

The Women's Engineering Society founded The Top 50 Women in Engineering Awards (WE50) in 2016 to showcase the diversity of women engineers making a difference to people's lives.

The awards are announced each year on 23 June which is International Women In Engineering Day (INWED) a campaign started by WES to raise the profile of Women Engineer's around the world.

Each year WES chooses a different theme for the WE50 and INWED and for 2025 the theme for the WE50 is: Together We Engineer

Engineering thrives on collaboration, innovation, and the power of diverse minds working together. The theme for the Top 50 Women in Engineering Awards 2025, Together We Engineer, celebrates the collective strength of engineers who unite across disciplines, challenge conventional boundaries, and drive progress through teamwork.

Whether enhancing projects through group efforts, integrating unique perspectives, or fostering connections that push engineering forward, this year's awards recognise those who exemplify the spirit of collaboration in engineering.



Dr Katherine Critchley
President, WES

The Top 50 Women in Engineering (WE50) awards have become a cornerstone of the Women's Engineering Society's celebration of International Women in Engineering Day (INWED). These awards shine a spotlight on the many talented and diverse professional women contributing to the engineering sector, while offering valuable insight into the wide-ranging roles they perform. This year is no exception. With the theme 'Together We Engineer', both INWED and the WE50 celebrate how engineers collaborate across diverse teams to create better outcomes for the society they serve.

These inspirational women exemplify an extraordinary level of dedication to their professional endeavour, not only through their daily work but also through numerous initiatives that showcase the impact of engineering and actively promote it as a vital and rewarding profession.

Congratulations to all the winners of this prestigious award, and those honoured among the top 100. Your achievements inspire us all.



Susan Robson MBE
Chief Executive Officer (Interim), WES

Engineering has always pushed boundaries of knowledge and innovation. The WE50 awards, led by the Women's Engineering Society, celebrates those women who have both excelled in the practice of engineering and pushed the boundaries of who gets to take part.

This year, conversations around Equity, Diversity and Inclusion have faced resistance. But engineering has always been about solving real-world challenges, and fairness is one of them. We will not be deterred from ensuring that opportunity reaches the best minds, not just the familiar ones.

It would be remiss not to acknowledge two people who have long championed these values. Dr Hayaatun Sillem CBE, whose tenure at the Royal Academy of Engineering has been marked by extraordinary vision, relentless drive and an unwavering commitment to ensuring engineering is for everyone. As she moves on to new challenges, we offer our deepest thanks and warmest wishes.

We also acknowledge Dawn Bonfield MBE, whose dedication to equity in engineering has left an indelible mark on the profession. As the founder of International Women in Engineering Day (INWED), she has tirelessly championed visibility, inclusion, and opportunity for women in engineering, ensuring that their achievements are celebrated on a global scale. We extend our heartfelt gratitude for her unwavering commitment and impactful contributions.

Congratulations to our WE50 winners. You are not just shaping the future of engineering; you are engineering the future itself.

#WE50

#INWED25

#TogetherWeEngineer

WE50 Through The Years

2024: Enhanced by Engineering

2023: Safety and Security

2022: Inventors and Innovators

2021: Engineering Heroes

2020: Sustainability

2019: Current and Former Apprentices

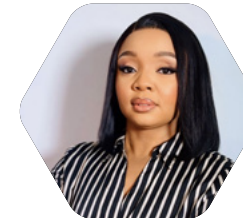
2018: Returners and Transferrers

2017: Under 35

2016: The Inaugural Top 50 Women in Engineering



Thank You To Our 2025 WE50 Judges:



Dr Judith Abolle-Okoyeagu

Principal Lecturer and Head of Electronic and Electrical Engineering

Judith, Principal Lecturer and Head of Electronic and Electrical Engineering at Robert Gordon University, is a Chartered Engineer and Fellow of IMechE. With 15+ years of experience, this Top 50 Woman in Engineering is passionate about increasing female representation and fostering diversity in STEM through her Ecstemic Network.



Danella Bagnall

Technical Director, JLR

Bio Unavailable



Tej Bahia

Business Unit Director, Arcadis

Tej, a 2023 Men As Allies Award winner, is transforming the construction industry by championing gender balance and pay equity. He increased female representation in his Business Unit from 15% to 30% in two years, with a 50% goal by 2025. Tej mentors women, recruits diverse talent, and fosters an inclusive culture, earning him "Construction Leader of the Year" and a Queen's Award.



Faye Banks

Global Head of Transmission & Distribution, Turner & Townsend

Faye is Global Head of Transmission & Distribution at Turner & Townsend. Faye brings more than 30 years' experience as a chartered senior professional, with substantial experience working across Electrical Transmission, Electrical Distribution, Experience in EHV, HV and LV electrical engineering from conceptual to detailed design in utilities, renewable power, traction power, water & waste water.

WE50 Judges 2025



Ann Dowling
Deputy Vice-Chancellor, University of Cambridge

Ann is a Deputy Vice-Chancellor and Emeritus Professor of Mechanical Engineering at the University of Cambridge, where she was Head of the Department of Engineering 2009-14. Ann is currently non-executive director of the Smiths Group plc, chairing the Innovation and Sustainability Committee, a Commissioner of the Royal Commission for the Exhibition of 1851, chairing the Industry and Engineering Committee, and a Trustee of the Isaac Newton Trust. She is a Fellow of the Royal Society and Royal Academy of Engineering and is a Foreign Member of the US National Academy of Engineering, the Chinese Academy of Engineering and of the French Academy of Sciences.



Kate E
DD for Engineering Cyber, GCHQ

Kate, DD for Engineering Cyber at GCHQ, is responsible for enabling strategic insight and advantage through technology and networks.

As a Principal Solutions Architect from external global industry, Kate is also co-lead of GCHQ's Technical Leadership skill. Kate has experience in the global commercial and manufacturing sectors, and complex multi-country strategy and change leadership.



Kerry Evans
Technical Director (Highways) Eco-Scope

Kerry is a Chartered Engineer and winner of the Karen Burt Memorial Award in 2024. She is a Fellow of WES and the IHE, and CIHT. Kerry served as the Regional Representative to Council for the CIHT Cymru Wales region from 2018 to 2024. Kerry is the Chair of the Trustee's of the Menai Bridge's Museum which celebrates the industrial heritage and engineering principles of the two Menai Bridges.



Kim Everitt
Transport Systems Engineer, Energy Systems Catapult

Kim, a Transport Systems Engineer at Energy Systems Catapult, is a technical lead on the ITES project, advancing net-zero energy systems. With a background in hydrogen fuel cells, she drives sustainable solutions. As co-chair of WES ECB and a STEM ambassador, Kim passionately advocates for women engineers and inspires the next generation.



Steve Gill
Engineering and Business Consultant

Stephen, a multi-award-winning engineering consultant and international business leader, founded World Refrigeration Day. With 45+ years' experience, he promotes diversity, equity, and sustainability. A past-President of the Institute of Refrigeration, he founded INWIC and received the WES Men as Allies award for promoting gender balance. Stephen also created Dyslexia in Engineering Day, empowering underrepresented groups globally.



Paulina Godfrey
Sr Director Energy & Environment EMEA, Hilton

As a seasoned executive, Paulina bridges the gap between environment, energy, and engineering. Her passion lies in driving sustainable change that positively impacts corporate bottom lines, reputations, and communities. With a proven track record, she excels in strategic relationships, results-driven solutions for environmental programs, energy and water efficiency, carbon reductions, energy procurement and ESG initiatives. Paulina is also a champion of employee empowerment, fostering engagement, recognition, training, and development for corporate professionals.



Kristine Hammond
Senior Project Manager, Amazon

Kristine, a Chemical Engineer with an MBA, is Amazon UK's Senior Project Manager for Field Engineering. She began her career at Unilever, rising to Director of Global Deodorants R&D Processing and Analytics. After gaining international experience in the USA, she joined Amazon UK in 2019, successfully leading multiple fulfillment centers. Kris, who also serves as UK President of Amazon's Families in Operations affinity group, is recognized for her expertise in manufacturing, supply chain, and operational leadership, demonstrating women's impact in senior technical roles.



Julie McManus
Chief Systems Engineer, Leonardo Electronics

Julie has over 30 years' experience in the development and management of complex systems across the whole lifecycle. Julie's focus has been the telecoms, space and defence sectors and she is currently a Chief Systems Engineer at Leonardo Electronics. Julie is a Chartered Engineer and fellow of both the IET and WES.

WE50 Judges 2025



Cathy McClay
Managing Director, National Grid DSO

Cathy is Managing Director of National Grid DSO where she is focused on enabling a smart, flexible and decarbonized energy system cost-effectively. She has over 25 years experience in the energy industry and has held senior roles in EDF, NGESO, Sembcorp and Neom in Saudi Arabia. In Neom she was responsible for developing the system operations and flexibility assets required to operate a fully renewable electricity system and also established a women's network. She was awarded an OBE for her services to decarbonisation and the Energy Industry and is a Fellow of the Royal Academy of Engineering.



Linda Miller
Construction Director, Bechtel Infrastructure

Linda has more than 35 years of experience leading complex transportation infrastructure construction mega-projects in the UK, USA, Australia and Canada. A highly esteemed engineering professional, she is a Fellow at the Institute of Civil Engineers (ICE) and an Officer of the British Empire (OBE), selected specifically for her positive impact on engineering and promoting gender equality. Prior to joining the construction industry, Linda served the US Army as an Officer and Helicopter Pilot in Command. Linda holds a Bachelor's Degree from West Point Military Academy and Master's Degree from University of California Berkeley.



Laura Shrieves
Vice President of Engineering, Ultra Maritime

Laura Shrieves has been the VP of Engineering for Ultra Maritime since April 2024. In this capacity she leads engineering operations in the UK, bringing over 19 years of experience in systems and software engineering across the defence and transport sectors. Beyond her corporate responsibilities, Laura is a dedicated advocate for diversity and inclusion in engineering, she serves as a trustee on the board of the Women's Engineering Society (WES) and has been recognised as a Fellow of both the Institution of Engineering and Technology (IET) and WES.



Nina Skorupska CBE
Non Executive Director, Great British Energy

Nina, with 40+ years in energy, became the UK's first female Power Station Manager for RWE npower, progressing to executive roles in the RWE Group, including Director of Performance Improvement in Germany and board member of Essent N.V. After RWE, she became CEO of the Renewable Energy Association and a Non-Executive Director for WISE Campaign. Awarded a CBE for contributions to renewables and equality, she's a Fellow of the Energy Institute. She advises the UK government on Net Zero and holds Non-Executive Director roles at Transport for London and Royal BAM N.V., and is an independent advisory panel member for National Grid ESO and National Grid Electricity Distribution.



Vicky Wills
Associate Acoustic Consultant, AtkinsRéalis

Vicky is an Associate Acoustic Consultant at AtkinsRéalis, where she has worked for over 20 years. Vicky has a passion for STEM Outreach and herself was listed as one of the WES50 in 2016.





The Top 50 Women In Engineering – The Full List For 2025:



Yewande Akinola
Technical Director, CBRE

Yewande is a dedicated champion for women in engineering leading the creation of the Ripple Effect Conference, a pioneering event uniting women in engineering and technology. Her collaborative, boundary-breaking approach created a dynamic platform for innovation, leadership, and connection. By breaking silos and empowering diverse voices, she created a lasting platform to retain talent and drive progress in the industry.



Anam Balbolia
Principal Engineer, WSP

Anam co-led a transformative project to improve transport safety for women and girls in Cambridge. Applying intersectional analysis and inclusive design, her work influenced 12 further schemes. She champions all-female engineering teams, mentors young women in STEM, and drives sustainable, collaborative solutions that challenge norms and advance equity in infrastructure.



Julia Barr
Commercial Manager, Mott MacDonald

Julia led a nuclear client through the UK's GDA process for small modular reactors, managing contracts, compliance, and export control. She developed training, influenced policy, and championed flexible working. A mentor and role model, she breaks barriers for women in nuclear and defence through leadership and advocacy.



Elena Brake
Trainee Engineer, Fishtek

Elena, a disabled former artist and engineering student, champions equity, diversity, and inclusion across academia and industry. She co-chaired the Student EDI Committee, influencing her school's Athena Swan Silver Award, and chairs ConstructAbility, actively working to reduce barriers for disabled individuals in the industry. Her creativity and resilience inspire a more inclusive engineering future proving that disability is a strength and catalyst for innovation.



Christina Brugger
Product Consultant, InsightSprint

Christina leads the development of innovative engineering products that transform safety, finance, and operations uniting technical and commercial teams to deliver impactful products. She bridges technical and commercial teams, drives user-focused solutions, and fosters collaboration. She also founded The Assertion Mastery, empowering women engineers with assertiveness and confidence, fostering cross-industry collaboration, encouraging mutual support and professional growth.



Denise Cárdenas López
Vice President, Strategic Capability and Integrated Delivery, Amentum

Denise created the Amentum Way IMS, a transformative framework enhancing collaboration, governance, and risk management across engineering teams. Her inclusive leadership drives performance and innovation. A global advocate for equity and sustainability and UN Women UK delegate in 2024/2025, she mentors women in STEM and founded The Future of Engineering a not for profit uniting engineers across cultures to collaborate on sustainability and innovation and to inspire lasting change.



Brigit Coleman-Green
Transition into Service Readiness, Ministry of Defence;
Submarine Delivery Agency

Brigit leads the complex multi-billion pound Dreadnought Class Transition into Service Readiness, orchestrating, multi-disciplinary delivery across the MOD. A Chartered Engineer her innovative leadership has boosted transition enablement, transformed defence engineering, and earned high-level recognition for enhancing operational readiness and enterprise integration. She exemplifies integrated defence engineering, driving innovation through teamwork at scale.



Emily
Software Engineer, GCHQ

Emily led the development of scalable AI/ML tools enhancing developer productivity across UK intelligence agencies. She is also a passionate advocate and role model for women in engineering, inspiring future generations and creating equitable work environments. Her inclusive leadership and technical excellence exemplify the power of collaboration in software engineering.

WE50 Winners 2025



Honora Driscoll

Ph.D student, University of Oxford

Honora pioneers green energy research, modelling green ammonia production using tidal stream energy for her PhD. A published researcher and former solar cell intern, she also leads Oxford's Women in Engineering Network. Her work advances sustainability while promoting inclusion, inspiring collaboration and progress across the engineering community.



Lauren Eatwell

Head of WindWings, BAR Technologies

Lauren leads the adoption and commercialisation of WindWings at BAR Technologies, integrating wind-assisted propulsion into global shipping. She bridges engineering, operations, and policy to deliver scalable, low-emission solutions. Her collaborative leadership drives regulatory support and industry transformation, advancing practical, sustainable technologies to meet maritime decarbonisation goals.



Marianne Ellis

Director of CARMA, EPSRC Sustainable Manufacturing Hub, University of Bath

Marianne leads the EPSRC-funded CARMA Hub, uniting six universities and industry to develop scalable, net-zero manufacturing for cultivated protein and palm oil alternatives. She champions sustainability, inclusion, and public engagement, driving innovation in cellular agriculture and advancing education, training, and workforce development across the UK and beyond.



Pamela Esin

Associate Director, HDR Inc.

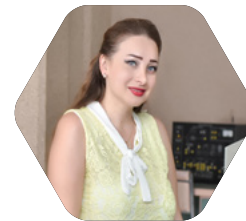
Pamela leads sustainable electrical design for hyperscale data centres across Europe, integrating innovative cooling and power solutions to meet AI and net-zero demands. A champion for women in engineering, she mentors future talent and fosters STEM outreach building collaboration across disciplines and generations to drive lasting impact in industry and community.



Anni Feng

Associate Director, Hoare Lea

Anni has spent over 14 years championing equity in engineering, leading inclusive digital health projects from Peru's hospital rebuild to Scotland's first digital hospital. As an IET Trustee and mentor, she empowers underrepresented voices, fosters cross-cultural collaboration, and redefines digital engineering through empathetic leadership, systemic change, and inclusive innovation.



Dr Nour Ghadban

Research Assistant, University of Glasgow

Nour pioneers AI driven healthcare innovations, from contactless monitoring to inclusive speech recognition. She leads interdisciplinary collaborations across engineering, medicine, and AI, ensuring fairness and accessibility, and demonstrating that teamwork is key to breaking barriers and driving engineering progress. A Senior IEEE member and WES Fellow, she promotes diversity in STEM, mentoring future leaders and bridging academia, industry, and policy.



Dr Priyanka Ghosh

Advanced Research Engineer, The Manufacturing Technology Centre

Priyanka pioneers AI-driven laser processing at MTC, this innovation is transforming UK manufacturing by reducing product development timelines and boosting productivity. She also champions ethical, inclusive, and sustainable AI-assisted manufacturing, with a strong focus on supporting women and BAME researchers entering the sector. Her work bridges innovation and equity, embodying engineering collaboration to shape a more sustainable, inclusive Industry.



Alice Goodwin

Project Engineer - Aircraft Asset Management, Virgin Atlantic

Alice is a Project Engineer at Virgin Atlantic and UK Government Aviation Ambassador. She leads complex aircraft transitions, ensuring compliance and cross-functional coordination. A passionate advocate for diversity, she mentors, speaks publicly, and shares her journey, proving how lived experience and inclusive leadership drive innovation in aviation.

WE50 Winners 2025



Poppy Harrison
Senior Engineer, AtkinsRealis

Poppy advances nuclear engineering through digital innovation at AtkinsRéalis, leading pressure systems projects in fission and fusion. A champion for inclusion, she co-chairs SheCanEngineer, mentors early-career engineers, and drives ED&I for the London branch of IMechE. Her collaborative leadership bridges disciplines, empowers others, and inspires sustainable, inclusive progress across engineering and STEM.



Rachel Hayden
Senior Civil Engineer, WSP

Rachel is a Project Manager on HS2 and a changemaker in civil engineering. She led industry-wide action on sexual harassment, and passionately encourages young women into STEM through ambassadorships and mentorship. She also fosters inclusion through initiatives like ICE and WSP's "Future of Work." Her courageous, collaborative leadership is shaping a more respectful and diverse engineering future.



Dr Rachael Hazael
Associate Professor in Applied Materials, Cranfield University

Rachael developed a world-first sustainable blast mitigation system using vegetation. Solely leading the project, she secured government funding, and validated the concept through testing. Her innovation redefines protective design blending environmental sustainability with life-saving impact across defence and infrastructure. Her leadership, and mentorship of female PhD students in sustainable protective solutions exemplify her significant impact in explosive engineering.



Puja Hazlehurst
Head of Product Engineering, Caeli Nova

Puja led the development of Caeli Nova's first aviation product, integrating it onto a flight test aircraft. Her authentic leadership fostered a high-performing, inclusive culture. By championing diversity and mentoring women in engineering, she redefined collaboration driving innovation through empowerment, excellence, and purposeful teamwork.



Kareema Hilton
Machining Applications Theme Lead, NMIS

Kareema led the Machining 4.0 project, helping over 500 SMEs adopt Industry 4.0 technologies. At the University of Strathclyde's AFRC, she introduced advanced machining strategies, reduced waste, and boosted efficiency. Her cross-disciplinary leadership empowered UK manufacturers and earned her the CEED Women in Manufacturing award for STEM advocacy.



Dr Fauzia I. Abro
Director of Cyber Security, Royal Holloway, University of London

Fauzia leads global cybersecurity and AI governance initiatives, expanding access to education through a pioneering distance learning programme. As Global Ambassador for Responsible AI and Founding President of Women in STEM, she unites academia, industry, and government, driving innovation, ethical standards, and inclusion across 190+ countries.



Melissa
Principal Project Manager, HDR Inc.

Melissa led the commissioning of the SINES project, a 495MW hyperscale data centre in Portugal, achieving 100% green energy and carbon-neutral operations. She championed circular economy principles, ocean water cooling, and site repurposing uniting cross-disciplinary teams to set new benchmarks in sustainability, energy efficiency, and environmental innovation in data centre design.



Imisi Joseph
Senior Data Analyst, JLR

Imisi transformed propulsion engineering by pioneering data-driven decision making through DOTA research, leading to a new data analytics department. She fosters collaboration across teams, drives over 50 data products, and champions STEM outreach, inspiring young girls while promoting inclusivity and sustainability within engineering and the wider business.



Natasha Khan
Nuclear Safety Engineer, Mott MacDonald

Natasha is a Nuclear Safety Engineer leading key aspects of the Small Modular Reactor Generic Design Assessment, including ALARP strategy and fault studies. She champions ED&I through leadership roles in Women in Nuclear and is Co Vice-Chair of the Europe and UK Advancing Race and Culture, inspiring change through inclusive excellence.

WE50 Winners 2025



Jolie Lau
Facade Engineer, Arup

Jolie, a graduate at Arup, is redefining decarbonisation in the built environment through her thought provoking “Time Value of Carbon” research. A rising expert in the Facade discipline across the UK and beyond for Decarbonization studies, she integrates digital tools and cross-disciplinary insight. Her inclusive leadership and mentorship inspire urgent, data-driven climate action across engineering and construction.



Oana Lazar
Embedded Software Engineer, Tessent Embedded Analytics (Siemens Electronic Design Automation)

Oana led the Invent Plus project, delivering hands-on engineering kits to 200 disadvantaged schoolgirls during lockdown. She secured funding, built a volunteer team, and partnered with universities to bridge STEM education gaps. Her inclusive leadership and innovation left a lasting impact on outreach, equity, and global STEM engagement.



Hannah Livingstone
Materials Engineering Degree Apprentice, Rolls-Royce

Hannah led the implementation of a scrap code system at Rolls-Royce. She is also a passionate advocate for engineering and apprenticeships developing STEM outreach resources reaching over 5,100 students and co-chairing a global education committee empowering young women and inspiring the next generation through hands-on leadership, innovation, and inclusive engagement.



Gail
Solutions Architect, GCHQ

Gail is a visionary Solutions Architect leading 60+ technologists in pioneering cloud adoption and next-gen data workflows. She's delivered scalable, cross-government systems, built trusted partnerships, and championed inclusive skill development. A role model in tech, Gail drives innovation, mentors women, and shapes the future of solutions architecture.



Keziah Magit
Final year PhD Student, University of Nottingham

Keziah is a PhD researcher and Product Manager. She leads innovation in pipeline safety and AI-driven sustainable transport, including co-designing an AI driven eco-transport app. She bridges engineering, business, and sustainability, championing diversity in STEM. A passionate mentor and advocate, Keziah supports students with disabilities and inspires future engineers through inclusive outreach and cross-disciplinary leadership.



Kathryn Malcolm
Associate Project Manager, Global Engineering, AstraZeneca

Kathryn is an exceptional engineer, managing a ground breaking new pharmaceutical project and spearheading inclusion initiatives. She developed a new graduate programme in the Global Engineering function, and as Chair of the WISE Young Professionals Board, she expanded its impact and strategy. Kathryn drives innovation, collaboration, and diversity mentoring future engineers and championing inclusion across the engineering and pharmaceutical sectors.



Fay Newham
Associate Engineer, Ramboll

Fay is a structural engineering leader with 40 years at Ramboll, renowned for her work on award-winning heritage projects like Clifford's Tower and Grimes Graves. She excels in sustainable design and stakeholder collaboration, while leading STEM outreach, early careers recruitment, and mentoring future engineers, including assisting younger Engineers through the chartership process. She champions inclusion and collaboration throughout the industry making a lasting impact on the profession.



Rachel Paley
Senior Consultant, Arup

Rachel, a Senior Consultant at Arup, played a pivotal role in the Hydrogen Network Safety project, leading safety narratives across 100+ hydrogen initiatives. She coordinated multidisciplinary teams, and shaped UK hydrogen policy. Rachel supports inclusive outreach especially with those in underserved regions and inspires future engineers through her leadership, collaboration, and technical excellence.

WE50 Winners 2025



Cambell Plant

Asset Management Consultant, Binnies UK Ltd

Cambell drives innovation in data analytics for engineering, from hydrogen transition tools to award-winning leakage solutions. A passionate STEM advocate, she founded Manchester's WISE society and chairs RSK's Accessibility Network. Living with Cerebral Palsy, she supports inclusion, inspires through action, and proves collaboration and determination can break all barriers.



Vanessa Quansah

Head of Construction Engineering, Lendlease

Vanessa, a Chartered Engineer, led safety-focused transport design on Cambridge's Newmarket Road, integrating women's lived experiences into engineering and developing practical solutions for active and public transport. Her intersectional approach now informs 12+ schemes. She champions all-female design teams, mentors women in STEM, and advocates for inclusive, climate-resilient solutions driving progress in equitable, skills-focused engineering.



Tanja Radu

Reader in Environmental Engineering, Loughborough University

Tanja leads a UK-Indonesian bioenergy project addressing heavy metal pollution while empowering women through clean energy training. She drives global Equity, Diversity, and Inclusion by mentoring female researchers from developing countries, fostering inclusive innovation, and building transformative international partnerships. Her cross-disciplinary work drives sustainable development and uplifts communities through collaboration, capacity-building, and a commitment to inclusion.



Ramsha Saleem

Assistant Engineer, WSP

Ramsha champions climate-resilient, people-focused infrastructure by integrating nature-based design, digital tools, and cross-disciplinary collaboration. As a 2024 ICE Future Leader, she's developing a global platform to connect industries and empower early-career professionals. Ramsha bridges academia and practice, shaping a nature-positive future and inspiring the next generation of engineers worldwide.



Magdalena Sartin

Group VP Engineering, Capital Projects and Operational Excellence, Johnson Matthey

Magda showcases exceptional leadership in engineering and advocacy for workplace equality. At Cargill, she built a gender-diverse team and mentored young professionals providing a skill-first approach to drive DEI. Her journey from technician to Senior Director reflects her resilience and dedication, which she uses to inspire women in STEM and advance diversity, equity, and inclusion globally.



Kelly Shungu

Hardware Engineer, Leonardo

Kelly, a hardware engineer at Leonardo, created an award-winning podcast amplifying women's voices in STEM. Her platform connects engineers worldwide, breaking disciplinary and cultural barriers. Through storytelling, advocacy, and technical excellence, she builds inclusive communities, promotes neurodiversity, and redefines representation, proving engineering innovation and empowerment go hand in hand.



Barbara Smitten

Associate Director, Cundall

Barbara leads multi-million-pound data centre projects across Europe, growing Cundall's critical systems team and market share. She is recognised for her transformative leadership and ability to challenge conventional boundaries. She promotes gender equity, mentors junior engineers, and fosters inclusive, cross-disciplinary leadership in engineering and workplace culture.



Dr Meini Su

Senior Lecturer, University of Manchester

Meini is transforming construction with Graphene Green Concrete—an award-winning, fully recycled material adopted by Microsoft and United Utilities. As co-founder of GGC Ltd., she bridges research and industry, driving innovation, circularity, and inclusion. A sustainability champion, she mentors future engineers and fosters global collaboration in STEM.



Dr Jo-Anne Tait

Principal Lecturer, Robert Gordon University

Jo-Anne was instrumental in the creation of the RGU Echo Project, an anonymous digital platform supporting STEM students' mental wellbeing. By securing funding and uniting experts in engineering, nursing, and psychology, she created a transformative, stigma-breaking resource that fosters early intervention and empowers students to seek help in a safe, inclusive space.

WE50 Winners 2025



Ruth Tatanga

Senior Mechanical Engineer, Chapmanbdsp

Ruth is a Senior Mechanical Engineer and inspirational leader at Chapmanbdsp, known for revitalising complex projects and championing early-career professionals. As Global Chair of CIBSE YEN,

SheCanEngineer volunteer, and STEM advocate, she drives inclusion, outreach, and institutional progress, fostering collaboration, reform, and impact across engineering and the wider community.



Dr Evona Teh

Strategic Foresight Co-Founder/Innovation Lead, JLR

Evona has made an outstanding contribution to engineering innovation, resilience and leadership, co-founding JLR's Strategic Foresight team. A trailblazer in automotive engineering, she bridges

industry and academia as Imperial College's first female Visiting Professor, mentors globally, and champions diversity and inclusion throughout the industry.



Anna Terry

Principal Mechanical Engineer, AWE

Anna is a driving force in Additive Manufacturing, leading multi-million-pound R&D programmes. She shapes UK Defence strategy, and co-founded a Centre of Excellence with top universities. As a Staff

Sergeant, mother, and mentor, she champions diversity, supervises PhDs, and inspires future engineers through leadership, resilience, and a passion for equality and innovation.



Miss Davina Urquhart

Welding Engineer, AWE

Davina used her 35 years of welding expertise to reinstate a complex torch brazing process on a licensed nuclear site, navigating strict regulations and uniting stakeholders. A proud transwoman and

passionate educator, she champions LGBTQ+ inclusion and diversity in STEM blending technical excellence with advocacy to inspire future engineers through resilience and leadership.



Julia Ward

UK Project Development Director, Queequeg

Julia, Project Director at Queequeg Renewables, leads strategic innovation in clean energy while promoting diversity. Founder of FLISS, she mentors 800+ women in STEM, bridging academia and industry. Her leadership accelerates the UK's green transition, driving sustainability and inclusivity in renewable energy with inspiring impact.



Dr Saima Yasin

Professor, University of Engineering & Technology

Saima established a Centre of Excellence for Research, Development, and Training at the University of Engineering & Technology, Lahore. As the first female engineering professor and chairperson at her university, she created a forum for researchers, facilitated research, and provided safety and leadership training.



Tasneem Yousif

PhD Researcher and Assistant Lecturer, University of Nottingham

Tasneem is a leader in GNSS interference detection, the nominee developing a pioneering CubeSat payload for space-based monitoring. Her interdisciplinary work spans RF engineering, software, and space science. Through IEEE outreach and global advocacy, she champions women in engineering, empowering future talent and advancing satellite technology in a traditionally male-dominated field.



Jun Zang

Deputy Head of Department of Architecture and Civil Engineering, University of Bath

Jun is a global leader in offshore wind resilience with innovative tools for storm wave impact prediction. As her department's first female engineering professor, she leads global collaborations, champions gender equality, mentors future engineers, and drives sustainable marine energy innovation advancing coastal resilience and fostering inclusion in engineering leadership.



INTERNATIONAL WOMEN
IN ENGINEERING DAY

23 JUNE 2025

Notes:

Thank you sponsors

Thank you to the generous sponsors
supporting International Women in
Engineering Day 2025





Congratulations To
All Winners
#TogetherWeEngineer

WE5 